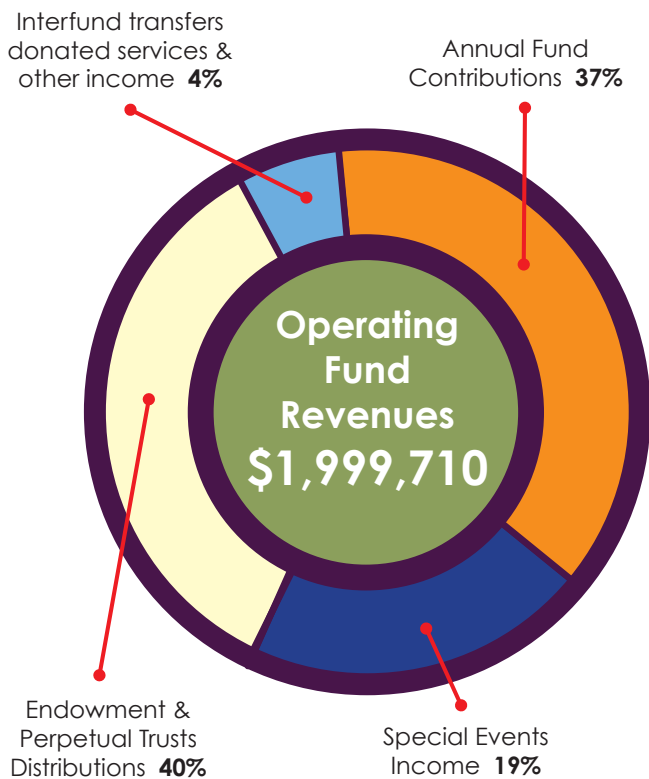


# FISCAL YEAR BUDGET:

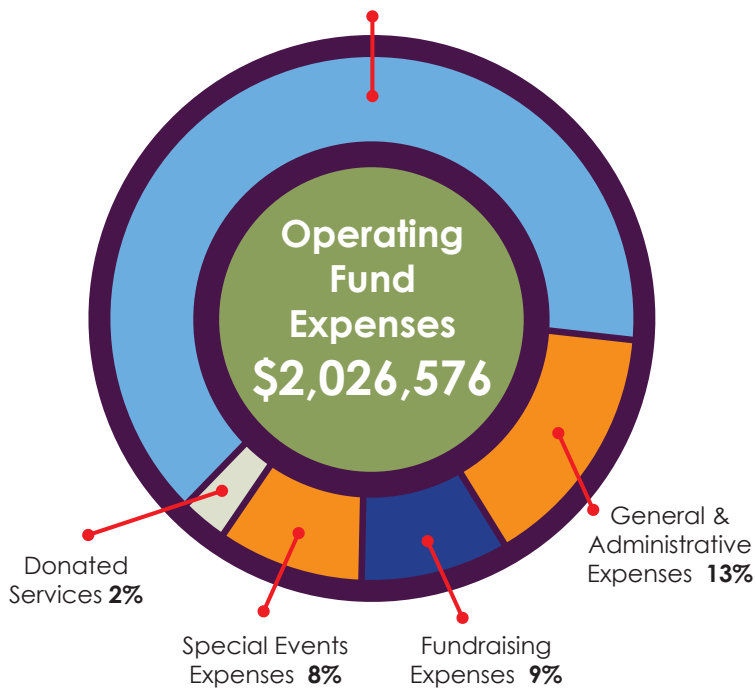
## THE CABBAGE PATCH SETTLEMENT HOUSE, INC. OPERATING FUND REVENUES AND EXPENSES

### Fiscal Year May 1, 2015 - April 30, 2016



<u>Operating Fund Revenues</u>	<u>Amount</u>
Annual Fund Contributions	\$727,277
Special Events Income	\$384,707
Endowment & Perpetual Trusts Distributions	\$802,287
Interfund transfers, donated services & other income	\$85,439
<b>Total Operating Fund Revenues</b>	<b>\$1,999,710</b>

Direct Program Expenses:  
(Recreation/Youth Development, Educational Opportunities, Counseling & Family Services) **68%**  
*(Recreation/Youth Development, Educational Opportunities, Counseling & Family Services)*



<u>Operating Fund Expenses</u>	<u>Amount</u>
Direct Program Expenses: <i>(Recreation/Youth Development, Educational Opportunities, Counseling &amp; Family Services)</i>	\$1,379,927
General & Administrative Expenses	\$265,544
Fundraising Expenses	\$179,990
Special Events Expenses	\$158,833
Donated Services	\$42,282
<b>Total Operating Fund Expenses</b>	<b>\$2,026,576</b>

Total Assets at April 30, 2016 were \$23,705,454 (including \$5,777,680 in Property & Equipment [net of depreciation] and \$17,311,281 in Endowments/Investments/Perpetual Trusts.) Total net revenue for all funds for the fiscal year ended April 30, 2016 was \$1,008,074 (Annual fund revenues of \$1,999,710; Contributions to endowments & property funds of \$203,102; Net endowment/perpetual trusts investment income/gains [losses] of [\$1,189,557] and other revenues [expenses] of [\$5,181]).

Total expenses for all funds for the fiscal year ended April 30, 2016 was \$2,293,762 including Depreciation expense of \$257,357.

The Cabbage Patch is a BBB Accredited Charity meeting all 20 Standards for Charity Accountability and adheres to Generally Accepted Accounting Principles (GAAP). The Patch has a 4-star rating from Charity Navigator.

