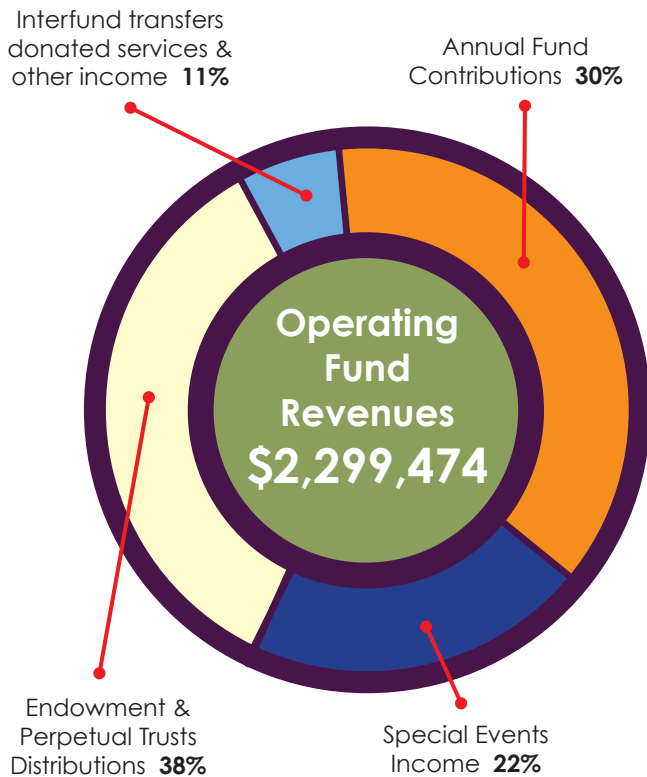


FISCAL YEAR BUDGET:

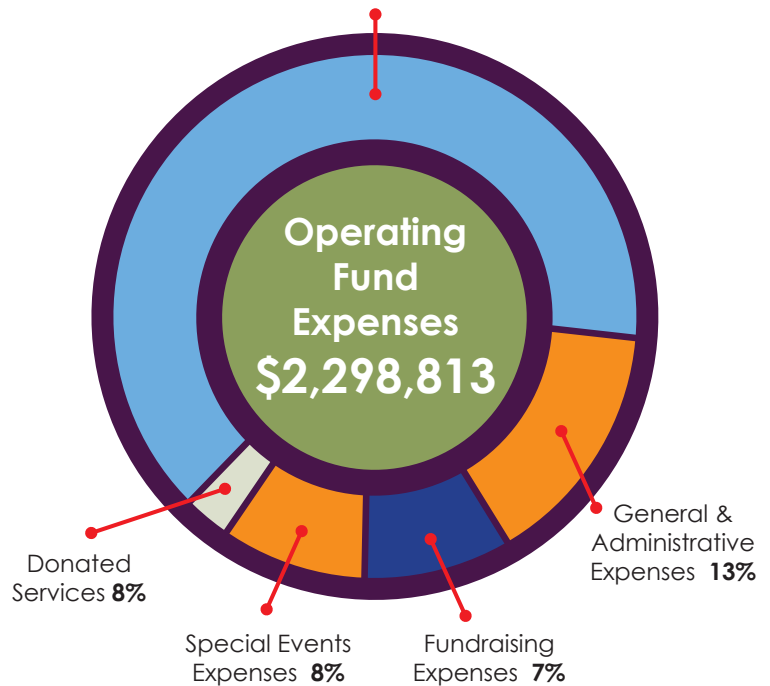
THE CABBAGE PATCH SETTLEMENT HOUSE, INC. OPERATING FUND REVENUES AND EXPENSES

Fiscal Year May 1, 2016 - April 30, 2017



Operating Fund Revenues	Amount
Annual Fund Contributions	\$669,570
Special Events Income	\$505,788
Endowment & Perpetual Trusts Distributions	\$880,007
Interfund transfers, donated services & other income	<u>\$244,109</u>
Total Operating Fund Revenues	\$2,299,474

Direct Program Expenses:
(Recreation/Youth Development, Educational Opportunities, Counseling & Family Services) **64%**
(Recreation/Youth Development, Educational Opportunities, Counseling & Family Services)



Operating Fund Expenses	Amount
Direct Program Expenses: <i>(Recreation/Youth Development, Educational Opportunities, Counseling & Family Services)</i>	\$1,465,564
General & Administrative Expenses	\$293,280
Fundraising Expenses	\$154,834
Special Events Expenses	\$192,977
Donated Services	<u>\$192,158</u>
Total Operating Fund Expenses	\$2,298,813

Total Assets at April 30, 2017 were \$24,788,959 including \$5,543,576 in Property & Equipment (net of depreciation) and \$18,801,390 in Endowments/Investments/Perpetual Trusts. Total net revenue for all funds for the fiscal year ended April 30, 2017 was \$3,554,496 (Annual fund revenues of \$2,299,474; Contributions to endowments & property funds of \$214,521; Net endowment/perpetual trusts investment income/gains (losses) of \$1,037,201 and other revenues (expenses) of \$3,300).

Total expenses for all funds for the fiscal year ended April 30, 2017 was \$2,563,497 including Depreciation expense of \$259,284.

The Cabbage Patch is a BBB Accredited Charity meeting all 20 Standards for Charity Accountability and adheres to Generally Accepted Accounting Principles (GAAP). We are also a 4 Star Charity (highest rating) with Charity Navigator.

