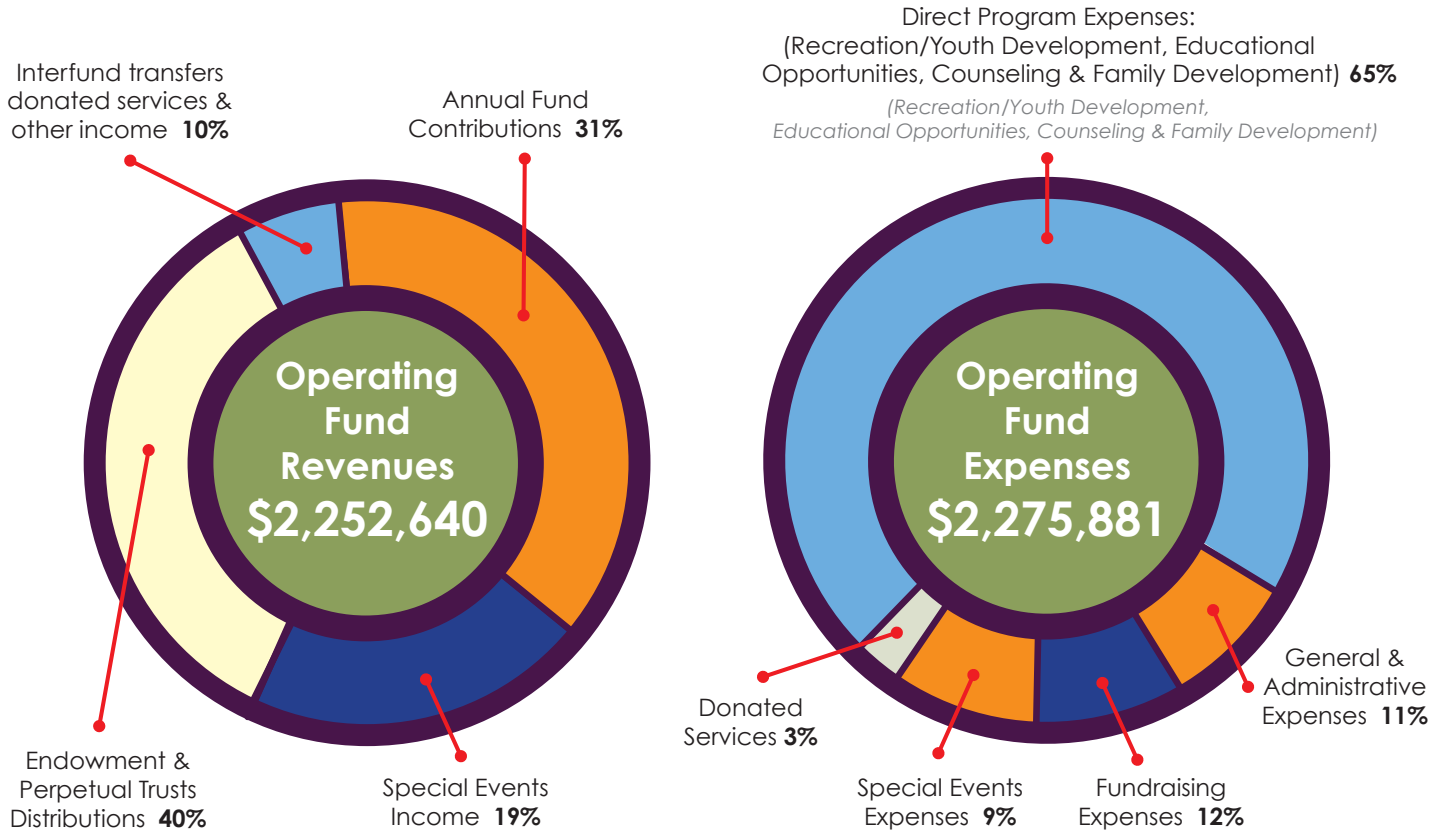


FISCAL YEAR BUDGET

THE CABBAGE PATCH SETTLEMENT HOUSE, INC. OPERATING FUND REVENUES AND EXPENSES

Fiscal Year May 1, 2018 - April 30, 2019



Operating Fund Revenues	Amount
Annual Fund Contributions	\$696,841
Special Events Income	\$434,737
Endowment & Perpetual Trusts Distributions	\$896,823
Interfund transfers, donated services & other income	\$224,239
Total Operating Fund Revenues	\$2,252,640

Operating Fund Expenses	Amount
Direct Program Expenses: (Recreation/Youth Development, Educational Opportunities, Counseling & Family Development)	\$1,486,984
General & Administrative Expenses	\$266,544
Fundraising Expenses	\$265,561
Special Events Expenses	\$194,731
Donated Services	\$62,061
Total Operating Fund Expenses	\$2,275,881
Net change in (Operating) Net Assets	(\$23,241)

Total Assets at April 30, 2019 were \$26,308,251 including \$5,134,525 in Property & Equipment (net of depreciation) and \$20,839,817 in Endowments/Investments/Perpetual Trusts. Total revenue for all funds for the fiscal year ended April 30, 2019 was \$3,266,395 (Annual fund revenues of \$2,252,640; Contributions to endowments & property funds of \$562,032; Net endowment/perpetual trusts investment income/gains (losses) of \$439,723 and other revenues (expenses) of \$12,000). Total expenses for all funds for the fiscal year ended April 30, 2019 was \$2,538,633 including Depreciation expense of \$257,352.

The Cabbage Patch is a BBB Accredited Charity meeting all 20 Standards for Charity Accountability and adheres to Generally Accepted Accounting Principles (GAAP).

