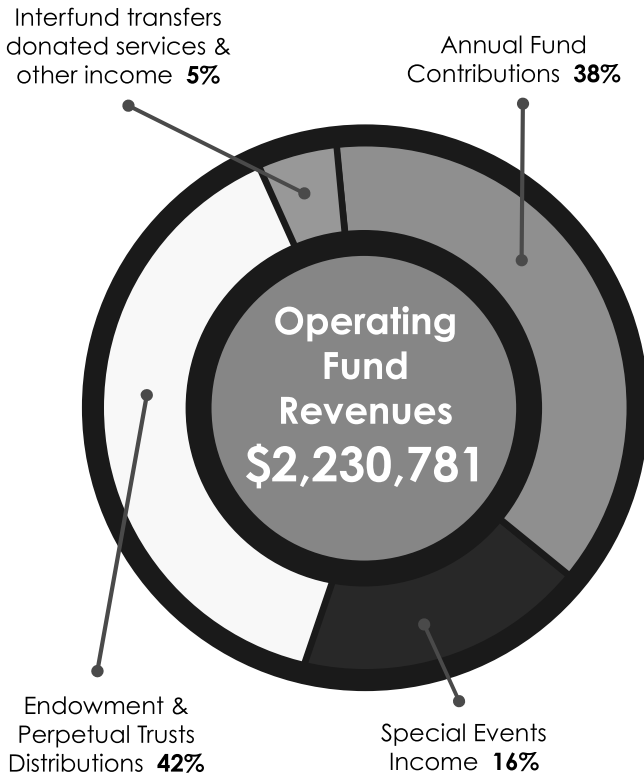


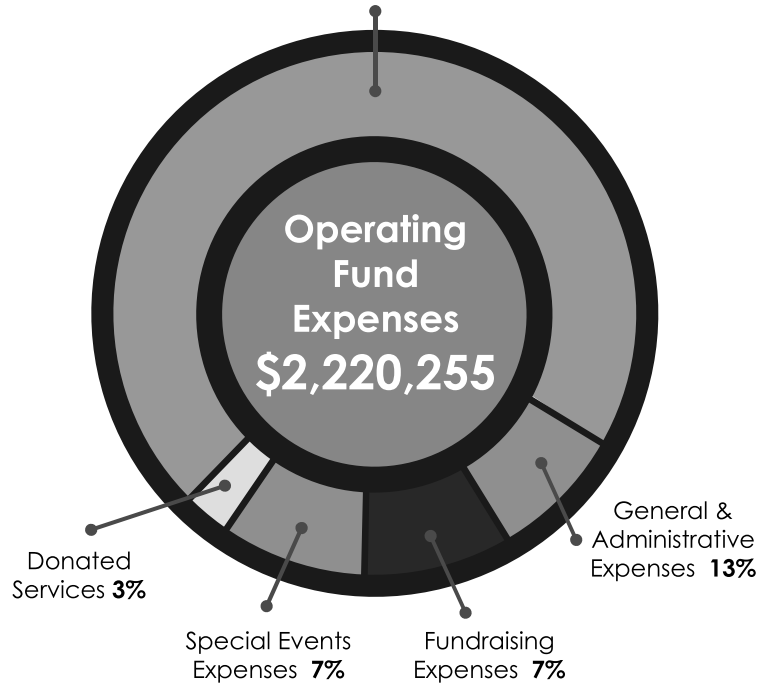
FISCAL YEAR BUDGET:

THE CABBAGE PATCH SETTLEMENT HOUSE, INC. OPERATING FUND REVENUES AND EXPENSES

Fiscal Year May 1, 2019 - April 30, 2020



Direct Program Expenses:
(Recreation/Youth Development, Educational Opportunities, Counseling & Family Services) **70%**
(Recreation/Youth Development, Educational Opportunities, Counseling & Family Services)



<u>Operating Fund Revenues</u>	<u>Amount</u>
Annual Fund Contributions	\$853,391
Special Events Income	\$350,230
Endowment & Perpetual Trusts Distributions	\$926,045
Interfund transfers, donated services & other income	\$101,115
Total Operating Fund Revenues	\$2,230,781

<u>Operating Fund Expenses</u>	<u>Amount</u>
Direct Program Expenses: (Recreation/Youth Development, Educational Opportunities, Counseling & Family Services)	\$1,549,500
General & Administrative Expenses	\$290,488
Fundraising Expenses	\$159,774
Special Events Expenses	\$147,263
Donated Services	\$73,230
Total Operating Fund Expenses	\$2,220,255
Net change in (Operating) Net Assets	\$10,526

Total Assets at April 30, 2020 were \$25,391,075 including \$4,959,240 in Property & Equipment (net of depreciation) and \$19,485,875 in Endowments/Investments/Perpetual Trusts. Total revenue for all funds for the fiscal year ended April 30, 2020 was \$2,583,628 (Annual fund revenues of \$2,230,781; Contributions to endowments & property funds of \$840,374; Net endowment/perpetual trusts investment income/gains (losses) of (\$1,662,100) and other revenues (expenses) of \$27,885). Total expenses for all funds for the fiscal year ended April 30, 2020 were \$2,512,904 including Depreciation expense of \$248,937.

The Cabbage Patch is a BBB Accredited Charity meeting all 20 Standards for Charity Accountability and adheres to Generally Accepted Accounting Principles (GAAP).

