

# Formula for SUCCESS



# A LETTER FROM THE EXECUTIVE DIRECTOR

Dear Friend of The Patch,

Last year was special at The Cabbage Patch! Recovery and growth are the two words that best characterize 2022.

For school-aged youth across the nation, the deficits exacerbated by COVID-19 have presented a significant challenge. At The Patch, these deficits have been addressed through well-designed recovery programs and consistent mentoring that boosts the hard work of our Patch members.

While these efforts have been underway, growth has occurred. Since the beginning of the school year, daily attendance has steadily increased. As a result of focused strategies, we are now exceeding pre-COVID numbers, regularly having over 100 youth each day at The Patch.

Your support has been vital to this effort! The long-term relationships that we develop require talented staff members working in well-maintained facilities – all of which has a cost. It is our generous donors – individuals, local businesses, churches, service organizations and foundations – that make this possible.

Recovery and growth lead us to a place where we can better fulfill our vision to empower youth and their families to achieve success and create a better world. And as always, we seek God's inspiration and guidance in this worthy task!

Rev. Corey G. Miller, D.Min.



## A "Positive Impact"

While we focus a lot at The Patch on the different kinds of support we provide to our families, we also value the neighborly blessings that families often share with each other. One such family is the Williamses: Greg, Kara, and their son Julian\*. Greg and Kara adopted Julian at a young age and brought him to The Patch to socialize with other kids. While the Williamses are a financially stable family, they have benefited greatly from the emotional support they receive from The Cabbage Patch community.

Early in their time at The Patch, Greg and Kara were struggling with how to best parent Julian through his behavioral challenges. They consulted with our counseling staff for feedback and options, such as how to evaluate his mental health with his pediatrician and school system. They also noticed how Julian thrived at The Patch, as a place to get out his energy, receive academic support, and try new experiences like aerospace and horseback riding through summer camps.

The Patch also became very valuable for the Williamses during COVID. When The Patch became a daytime Community Learning Hub, Julian became a full-time student. "We couldn't imagine what it would have been like without The Patch," Kara told staff members. "It takes so much focus to keep him working and on-task, there's no way he would have passed his classes without his pod."

Greg saw the needs present during the height of COVID and began making regular donations to our Food Pantry. He would regularly bring packing boxes full of cereal and flats of peanut butter to share. "The Patch and its families have been a blessing to us for years," he told Rev. Holloway. "This feels like the least we could do." The Williamses have continued to give as we returned to "normal" making regular donations to the food pantry and financially supporting our Christmas Partner Program. Even Julian has participated, becoming a Teen Leader and completing service hours in the programs in which he personally benefitted! Your generosity helps families like the Williams feel stable and supported, so they can pay it forward as well. At The Cabbage Patch, we show that love is giving to others.



Loving relationships have a  
"Positive Impact."



*\*Names changed to protect the privacy of those we serve. Photo for illustrative purposes only.*



## A "Laboratory" for Success

When a kid has been sitting in a school classroom all day, you would think the last thing they would want to do when they come to The Patch would be more schoolwork. However, for many of our members, that's exactly what you would find. In 2022, half of the members who came through our doors each day chose to take part in our Educational Opportunities Programs! That is great news, particularly since recent student test scores from the National Assessment of Educational Progress showed historic drops in math, reading, and grade-level competency last year.

While that is troubling, the good news is that the data also shows that academic recovery programs, like the ones here at The Patch, are the most effective tools students have in combating the post-pandemic gap.

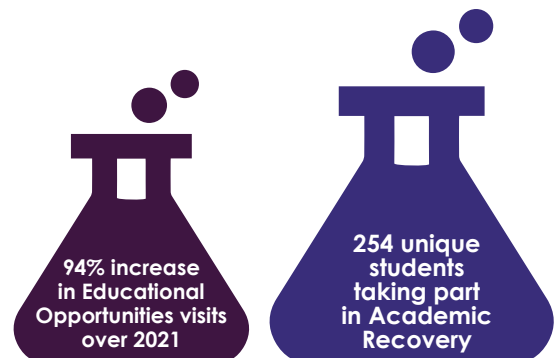
High-quality, structured homework support and an engaging summer educational enrichment program can help our members cut that gap in half!

One such member is Kiara\*, a seventh grader who is one of our most active members. "When I feel like I'm falling behind, I know The Patch is there for me," says Kiara. She continued, "I came here two years ago during The Patch's COVID remote learning program. That experience proved to me how important having support was because I didn't get bad grades like a lot of my friends. Now, I come every day to do my homework so I don't feel overwhelmed. I know I don't ever have to do it alone because I have help at The Patch!"



A Can-Do attitude is  
A "Signal of Success" in our  
Educational Opportunities department.

*\*Name changed to protect the privacy of those we serve.  
Photo for illustrative purposes only.*



## Partnership with Nativity Academy Results in the “Next Generation” of Patch Kids

If you looked around The Patch in early 2022, you would notice things looking pretty “normal,” at least by our standards. You would find kids playing flag football in the courtyard, creating paper mache sculptures in the art room, shooting hoops in the gym, and learning to pitch a tent in preparation for an overnight campout. What you might also notice, though, was that each of these activities had fewer participants than usual.

Before the pandemic, it was not uncommon to hear up to 100 kids a day moving through the halls of The Patch. Post-pandemic, we were seeing closer to 50 or 60 a day. This wasn't a problem unique to The Patch: a study by the National Recreation Foundation showed a delay in many school-aged children returning to structured recreation activities; with African American children, like many of those at The Patch, returning at a rate that was 42% slower.

After a strong summer attendance, we knew conditions were favorable to build up our numbers. We targeted a multi-faceted approach: offering transportation for the first time at our feeder elementary school, reconnecting with previous Patch members who fell away during COVID, and strengthening our partnership with Nativity Academy. All have resulted in increased attendance, but the Nativity connection has been the most fruitful.

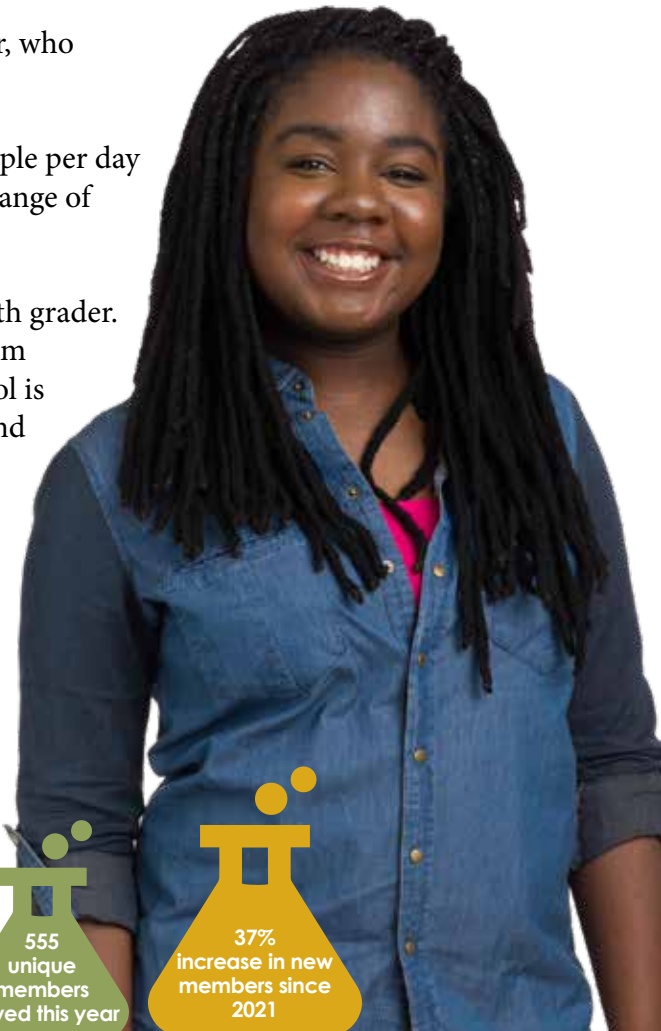
We were connected by Rob Crady, Patch and Nativity Board Member, who saw the potential synergy. Once Nativity Academy lost its after-school program coordinator, we began discussing how to partner. We currently work together to transport 30-40 young people per day to The Patch, where these students join other Patch youth in a wide range of activities. We have become their after-school destination.

“It feels like home here, and I love coming!” said Raina\*, a Nativity 8th grader. “I love the art room and the daily game room challenges.” Raina’s mom chimed in that, “Knowing my kids can be somewhere safe after school is such a blessing. Here she has homework help, a chance to exercise, and has made friends who can be a good influence on her. We love The Patch!”

With the amount of need in our community, increasing our numbers is a vital way to make an impact in Louisville.

Young people at The Patch are the “Next Generation” of future leaders.

*\*Name changed to protect the privacy of those we serve.  
Photo for illustrative purposes only.*



## The Partnership "Equation" for Good



When thinking of enduring partnerships, The Porcini/Farmer Children's Foundation always comes to mind. Since their initial partnership with The Patch in 2011, they have been a generous contributor to The Porcini/Farmer Children's Foundation Educational Opportunities Endowment Fund, Annual Golf Tournament, and Annual Fundraising Auction.

The generosity doesn't end there. The Porcini/Farmer Children's Foundation has also hosted a fundraising dinner with our Patch Partner Ambassadors Program, which is a Young Professionals group at The Patch. The last fundraising dinner event raised \$3,000 to help change the lives of the children and families at The Patch.

We are so grateful for this support! The Porcini/Farmer Children's Foundation's leader, Tim Coury, explained the value of our partnership, saying, "As cultivators of first-class experiences, we believe that Louisville's youth deserve the best in terms of opportunity, experience, and exposure; so, it's great working with The Patch to build bridges toward their future success." Cabbage Patch Executive Director, Corey Miller, echoed those sentiments, adding, "Generous gifts like those from The Porcini/Farmer Children's Foundation are vital because they empower us to continue meeting the evolving needs of the children, families, and young adults that we serve."

### HOW CAN YOUR BUSINESS HELP THE PATCH?

*Host a supply drive for canned foods, household products, or school supplies*

*Sponsor a fundraising event, like our Annual Golf Tournament or Fundraising Event*

*Establish an Employee Matching Gift Program*

*Donate or provide The Patch with discounts on your goods or services*

**Contact Jennifer Scott at [jscott@cabbagepatch.org](mailto:jscott@cabbagepatch.org) for more information.**

## A Legacy Gift Through Your Estate Plan "Exposes" A World of Potential

How do you want to be remembered? What are your lifetime values? How do you demonstrate those values to your family and friends after your lifetime? For Holly and Rob Crady, one of their lifetime values is investing in the next generation. They have demonstrated their life values through their current gifts by contributing to the Crady Family Overall Mission Support Endowment Fund at The Cabbage Patch, and they have demonstrated their commitment to the children of the future through their intention to leave a gift through their estate plan.

Rob and Holly Crady stated, "We believe in the mission and ministry of The Cabbage Patch with a firm conviction that every child deserves an opportunity to reach their greatest potential. We have chosen to include The Cabbage Patch in our estate plan by naming The Cabbage Patch as a beneficiary of an IRA. We hope others will join us and remember The Patch in their estate plan."

Giving a gift through an IRA/retirement account is a great way to make a charitable contribution. If you are age 70 or older, the amount gifted from an IRA is excluded from your taxable income, up to \$100,000 annually. If you name a charity as a beneficiary of your IRA, the portion given to the charity is not subject to income tax. Your family will inherit other assets which may not be subject to income tax to the same extent. So, you win by making a gift from your IRA because you reduce your taxable income during your life, your non-charitable beneficiaries win because they receive more tax-favored assets at your death, and charities win because they receive a much-appreciated gift.

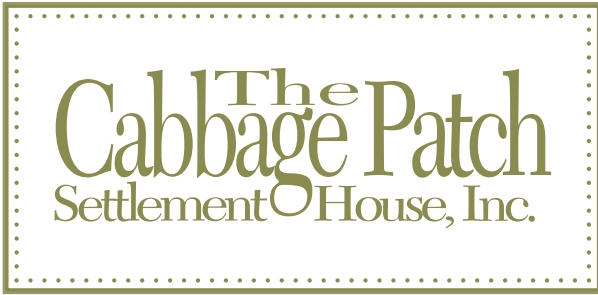
If you are interested in learning more about how you can leave a legacy through your estate plan and become a member of the 1910 Society at The Patch, contact Jennifer Scott at 502-753-4446 or email [jscott@cabbagepatch.org](mailto:jscott@cabbagepatch.org).



Like the Cradys, would you consider making a gift through your estate? Your gift can expose the children of The Patch to life-changing opportunities.



# ABOUT US



## Our Mission:

We are a local nonprofit, empowering children, youth, and families to reach their full potential since 1910. Our mission is to provide life-changing academic, recreational, and mentoring opportunities through Christ-centered values.

## Our Vision:

Our vision is to empower youth and their families to achieve success and create a better world.

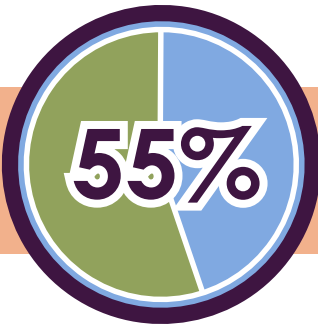
## The Cabbage Patch Team

27 full-time employees

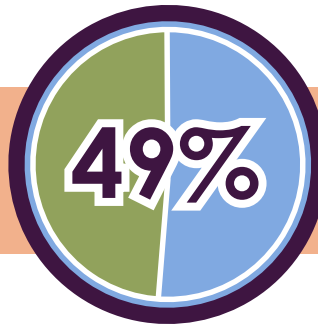
1 part-time employee

Two-thirds of leadership staff have an advanced degree

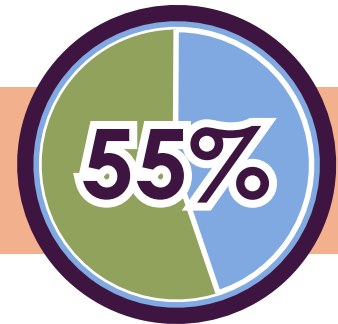
## In The Cabbage Patch Service Area:



55% of children live in poverty



49% of households earn less than \$30,000 per year



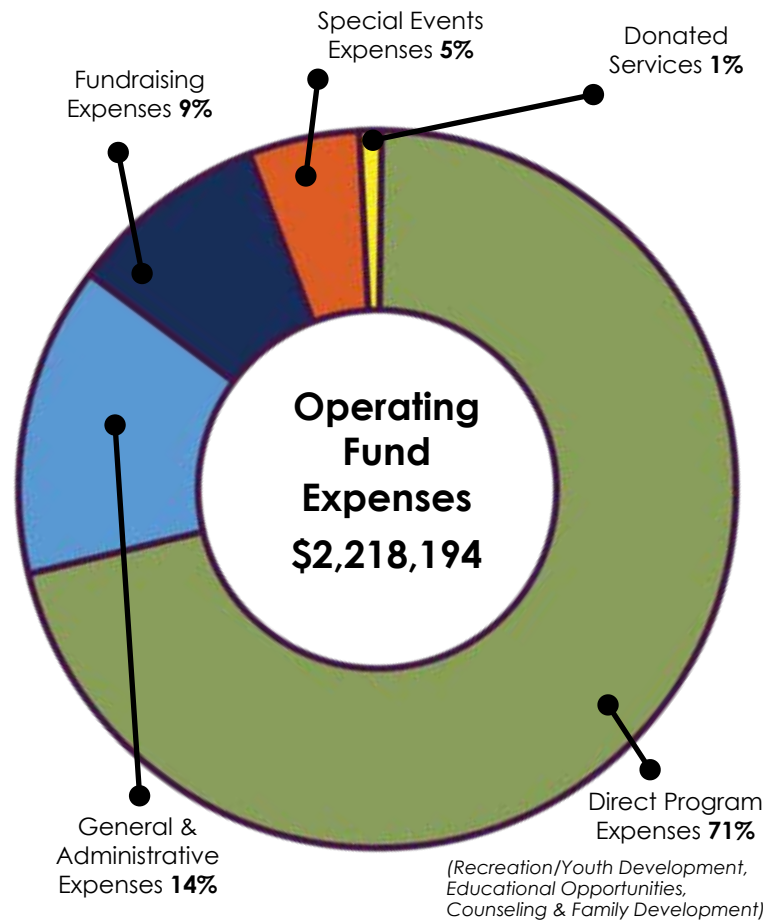
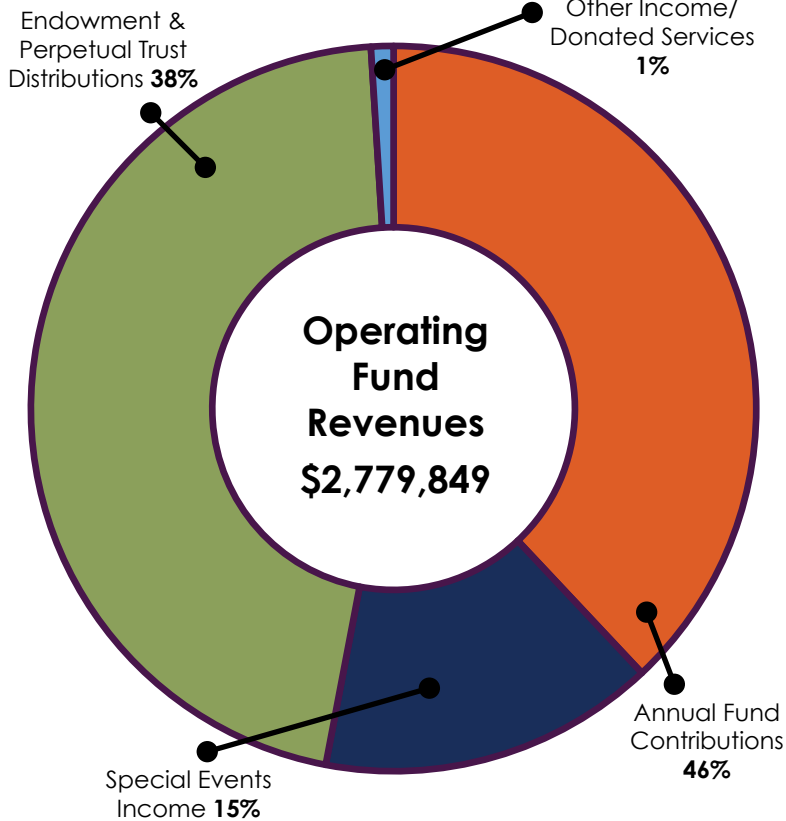
55% of those 25 or older have a high school equivalency or less



# FISCAL YEAR BUDGET (FPO)

THE CABBAGE PATCH SETTLEMENT HOUSE, INC. OPERATING FUND REVENUES AND EXPENSES

Fiscal Year May 1, 2021 - April 30, 2022



Operating Fund Revenues	Amount
Annual Fund Contributions	\$1,289,525
Special Events Income	\$412,843
Endowment & Perpetual Trusts Distributions	\$1,046,325
Other income/donated services & other income	\$31,156
<b>Total Operating Fund Revenues</b>	<b>\$2,779,849</b>

Operating Fund Expenses	Amount
Direct Program Expenses: (Recreation/Youth Development, Educational Opportunities, Counseling & Family Development)	\$1,586,921
General & Administrative Expenses	\$303,041
Fundraising Expenses	\$193,371
Special Events Expenses	\$117,916
Donated Services	\$16,945
<b>Total Operating Fund Expenses</b>	<b>\$2,218,194</b>
<b>Net change in (Operating) Net Assets</b>	<b>\$561,655***</b>

Total Assets at April 30, 2022 were \$29,599,209 including \$4,599,580 in Property & Equipment (net of depreciation) and \$24,483,572 in Endowments/Investments/Perpetual Trust. Total revenue for all funds was \$3,255,510 (Operating Fund revenue \$2,779,849 and Contributions to Endowment/ property funds \$475,661).

Net endowment/perpetual trust investment income/gain (losses) of \$(2,463,454). Total expenses for all funds for the FY ended April 30 2022 were \$2,444,015 including Depreciation expenses \$241,078 and investment fees \$114,002.

Ending Net Assets were \$29,454,699

\*\*\*During COVID-19, we were fortunate to receive several special one-time gifts in support of The Patch. Also due to COVID-19, many programs were limited and thus expenses were lower. Overall, we were blessed and were able to move surplus funds into our endowment to ensure that we are sustainable and able to serve Patch youth and families into the future. Good stewardship is an enduring hallmark of The Patch and our Board of Directors.

The Cabbage Patch is a BBB Accredited Charity meeting all 20 Standards for Charity Accountability and adheres to Generally Accepted Accounting Principles (GAAP).



# NAMED FUND HIGHLIGHT

## "Positively Charged" About Our Donors

When a donor comes to The Patch with a vision, we listen carefully. When they say they want to establish an endowment fund to encourage others to consider gifts to our endowment, we become intrigued with the possibility.

In 2019, special anonymous donors with this vision in mind started the Friends of The Patch Overall Mission Support endowment fund. These donors believed that loving relationships and support at The Patch changes lives and futures. They also believed that as disciples of Christ, they were called to be the hands and feet of Christ, reaching out to those in need with grace and unconditional love; establishing this fund was an expression of their stewardship of God's gifts.

Today, this fund has grown to approximately \$47,000, and 49 donors have joined in their vision over the years. When told about the current fund balance, these generous donors said, "This is exactly what our hope, dream and vision for this fund would be, with many small gifts adding together to have a big impact. We invite others to be endowment donors through The Friends of The Patch Fund. Together, we can make a lasting impact in the lives of the children and families at The Patch."



You can join our Friends of The Patch fund at any donation amount and "Positively Charge" the programs of The Patch for generations to come.

## NAMED ENDOWMENTS

### Overall Mission Support Endowment Funds

Barbara and David Brewer Memorial  
Joe Burks, Sr. and Lloyd (Pappy) Redman Memorial  
Cradly Family  
Caroline Taylor Davis Memorial  
Cyrus "Russ" Day  
Mary Ann Coleman Duddy Memorial  
William G. Duncan, Junior Memorial  
Friends of The Patch  
Harold Hawkins  
J. Tracy Holladay  
Rev. Calvin Holloway  
Louise Marshall  
Helen Dillon Mazzoli Memorial  
Betsy McConnell Memorial  
Theodore "Ted" Merhoff Memorial  
Meyer Family  
John L. and Lucy L. Milton  
Thames Castner Palmer-Ball Memorial  
Mark and Susan Pfeifer  
Arthur and Marian Kummer Raderer  
John S. Rankin  
Edgar and Doris Ritchie  
Jennifer L. Scott  
Jean Olive Smith (Mrs. S. Russell Smith, Sr.)  
Sharon Smith and James Mauch Family  
Diane and Rick Steinrock Family  
Thompson/Nash Family

### Recreation/Youth Development Funds

The Cabbage Patch Circle Arts  
Nancy Jane Cassis  
Giesel Family  
Elizabeth "Bunch" Sanders Griffin  
Kunau Family  
Lloyd "Pappy" Redman  
Caroline Price Reid  
Taylor/Dohrman Family Foundation  
Polly Williams

### Educational Opportunities Funds

Mrs. James (Edith) Breed  
Alex J. Burch Memorial  
Nancy Jane Cassis  
Roosevelt Chin  
Clay Family  
Joan Cralle Day  
Otis H. "Deacon" Ellis  
Fields Family Memorial  
Marea and William Gardner Foundation  
Dorothy Gauss Foundation  
Gill Family  
Kim Hazelwood Glass  
Kim Hazelwood Glass Memorial  
Kim and Myra Lee Glass  
Wood and Marie Hannah Foundation  
Mildred Horn Foundation

John "Fenton" Kottkamp Memorial  
Kurfees-Buchanan Memorial  
Lawler Family  
R. W. and Maggie T. Marshall  
Moisan Family  
W. Rodney Napier  
James Paton, III  
Porcini/Farmer Children's Foundation  
Caroline Price Reid  
Rotary Clubs of Louisville  
Sanders Family  
Luke and Sharon Schmidt  
Scholtz Family  
Dennie Schrecker Memorial  
Martin Sweets Memorial  
Frances Jones and Robert Jordan Theobald  
James and Dee Thornton  
Wells, Mapother and Rankin Families  
William E. Whaley, III  
Coretta and Stephen Wolford Family

### Building Preservation Fund

Louis O. Giesel, Sr.  
Spencer Harper, Jr. Memorial  
Snyder Family

# VOLUNTEER SPOTLIGHT

## Volunteers Provide "High Frequency" Fun at The Patch

Once a month, a chorus of bright voices rings out from Holladay Hall as a room full of children sing "Happy Birthday!" Surrounded by colorful banners and festive centerpieces, children enjoy cupcakes, games, and fellowship. Kids are all smiles as they leave the parties, and someone always takes a moment to offer their thanks. "I didn't get to have a big party this year because we were moving," eight-year-old Kymber\* said. "But this was great! I got music and games and a Lego set! Plus, all my Patch friends were here. Best. Party. Ever!"

Monthly birthday parties are a favorite event for our members, but this event would not be possible without the support of dedicated volunteers. Volunteers decorate the party room, plan an interactive game, and bring sweet treats and small gifts to celebrate the birthday kids. With all the work of planning and executing the event, these parties are a great way for groups to come together and volunteer at The Patch.

This year, two groups have become birthday party superstars and have made a big impact on our members. Members from the outreach team at Anchorage Presbyterian Church have hosted several times. With creative games and homemade cupcakes, they

really work to make our members feel special! Our other birthday superstars this year were Alexandra Ortiz and her mother, Sally Barr. These ladies and their spouses brought fun snacks and gift bags full of treats for the kids!

*Interested in volunteering? Contact Chelsea Kilburn, Volunteer Coordinator at [ckilburn@cabbagepatch.org](mailto:ckilburn@cabbagepatch.org).*



Celebrating a birthday at The Patch is a "High Frequency" moment for the children and helps them feel special.



*\*Names changed to protect the privacy of those we serve.*

## 1910 SOCIETY

The 1910 Society (as of 12/31/22) is a group of people who have made the children of The Cabbage Patch part of their estate plan. The people listed here have made the ultimate investment and ensured that generations of young people they will never meet have the ability to maximize their potential. We are grateful for the following people who have either designated The Patch as a future beneficiary or have left a gift for The Patch in their estate.

Anonymous  
Elwyn Abrams  
Dorothy J. Altis  
Gertrude Angermeier  
Viola Austin  
Maude and Walt Baker  
J. Gordon Baquie  
Vivian B. Barber  
Lois Barger  
Mary Virginia Bickel  
Alma Brabandt  
Barbara and David Brewer  
Loretta Brooks  
Prentice Brown  
Jim and Penney Carneal  
Larry Cashen and Susan Turner  
Roosevelt Chin  
Virginia Clark  
Doug and Gena Cobb  
James W. and Frances C. Compton  
Everett R. Cowen  
Rob and Holly Crady  
George Creznic, Jr.  
Alex and Cullen Croft  
Helen E. Dattilo  
Karl Daubert  
Carol Davies

Katherine M. Davis  
Anna A. Diecks  
Mary Ann Duddy  
Greg Ehrhard  
Mike and Buff Fallot  
Margaret Farley  
Mrs. William L. Fenley  
Anne B. Fields  
Dr. William H. Fields  
Lea Fischbach  
Dr. Jeremiah T. Flowers  
Elizabeth "Jeanne" Foree  
Mrs. E. S. Frischkorn  
Mrs. William R. Frost  
Louie and Norma Giesel  
Louis O. Giesel, Sr.  
Mrs. J. W. Gilliam  
Kim Hazelwood Glass  
Edward S. Graff, Jr.  
Audrey W. Graves  
Elizabeth "Bunch" Sanders Griffin  
Bill and Susan Grubbs  
David and Valerie Hall  
Frank Handley  
Doris Hardaway  
Elizabeth W. Hardwick  
Ruth H. Haskins

Nanette H. Hayes  
Edward and Gail Ritchie Henson  
Henry V. Heuser, Jr.  
Rev. J. Tracy and Debbie Holladay  
Mrs. Irving Holmgren  
Mrs. W. Howard Hopkin  
Mrs. Marvin Kirchner  
John Kraus  
Julia R. Kraus  
Otto and Dorothy Krause  
Baylor Landrum, Jr.  
Susan Lawler  
The Honorable Pierce Lively  
Louise Marshall  
Lucille S. Mattingly  
Joan H. Mayhugh  
Genevieve McCain  
George W. McCrocklin, MD  
Anna Z. McMichael  
Ted Merhoff  
Bill and Becky Meyer  
John and Lucy Milton  
Mrs. W. Harvey Moninger  
Doug Morris  
Katherine S. Mueller  
Kenneth J. Newman  
Susan and Mark Pfeifer

Margaret H. Pfeiffer  
Linda S. Pierce  
Mrs. Austin Proctor, Jr.  
Mrs. W. Dewey Raley  
John S. Rankin  
Caroline Price Reid  
Mr. and Mrs. Elmer Rickert  
Harry Rietze, Jr.  
Doris I. Ritchie  
Edgar C. Ritchie  
Eleanor R. Rudd  
Frances and Charlie Scholtz  
Jennifer Scott  
Dorothy Shellhamer  
Ollie Skonberg  
Jane Slaughter  
Jean Olive Smith  
Susan and Chip Snyder  
Chris and Susan Staples  
William F. Steineker  
Mrs. H. W. Stewart  
Bill Stites  
James Thompson  
Katherine G. Ussery  
John H. Ward, III  
Stephen and Coretta Wolford  
Oscar C. Wright, Jr.

## A "Magnetic" Ambassador For The Patch

### Tell us a little about yourself:

Growing up, I was the oldest of five kids, and we lived in the Park Hill housing projects. I attended DuPont Manual High School and continued my education at Jefferson Community College, and went on to the University of Louisville to study psychology.

Marita and I have been married for 47 years; we lived in the same neighborhood as children and went to The Patch together as kids. We have been blessed with a beautiful family; a son and a daughter (who have passed on), along with a wonderful son-in-law and two extraordinary grandsons.

One of the most influential people in my life was always my grandfather. As a Southern Baptist minister, he instilled the importance of faith in me; consequently, I knew when I started having my own family, faith would be a central part of my life. My grandfather loved me and was always 100% present with me, and he always shared his wisdom about how to become a better man. I aspire to be like him in all my relationships, especially with my grandsons today.

### Why did you major in psychology?

I was always curious about what people thought. It is important to me to influence others and impact them in a positive way. Unlike other teens, I was the kid walking around reading Psychology Today...it fascinated me at a young age.

### What was your career path?

I began my career working for Philip Morris after graduation, continued in sales with Volkswagen of America, and then settled in insurance. I was exposed to the insurance world by a mentor in my life. One day he allowed me to ride along with him while he dropped by his house to let his dog out. I was impressed with his fancy car, the long driveway to his house, and the flexibility he had in his life to let the dog out in the middle of the day. I thought, "I like this lifestyle; maybe I should consider insurance too." Needless to say, I was in the insurance business for 40 years before I retired.

### What experience at The Patch do you remember most, and what value do you carry forward in your life today?

We did lots of activities when I was at The Patch, but what I remember most were the adults that gave their time to make things better for us. They loved us and believed in us. I learned the value of giving back, and that's how I live my life today. Today, I coach tennis, mentor two young men, work with veterans, am an active member of Bates Memorial Baptist Church, and strive to be an active and present grandfather for my grandsons.



*Bob and Marita Willis*



Bob Willis serves on The Cabbage Patch Board of Directors and is the Board Development Committee chair. At the heart of all Bob does is what is best for the children and families at The Patch.

He wants to be sure that future generations know they are loved and have opportunities to achieve their God-given potential.

## SPECIAL THANKS

The Cabbage Patch wishes to thank the following individuals who played a significant role in planting seeds of hope and change in those we serve.

### Community Members

The Cabbage Patch thanks the following Community Members for lending their time and talents to board committees and special projects in 2022.

Rebecca Allen  
Kelly Burke  
Monica Davidson  
John Fidler  
James Giesel  
Pat Glasser  
Ben Goodsey  
David Hall  
Miles Harrison  
Ryan Kingery  
Leslie Lindsay  
Jessica Mattingly  
Lisa Mercado

Lisa Mills  
Grady Nutt  
Mark Pfeifer  
Janet Raderer  
Ryan Roling  
Paul Sagun  
Henry Sanders  
Robert Scholtz  
Bibhuti Sar  
Richmond Simpson  
Susan Staples  
John Stokes  
Dick Wilson

### New Board Members

The Cabbage Patch welcomes the following individuals who were elected to three-year terms on the Board of Directors, effective January 2023.

Dr. Tracilia Beacham  
Ebony Bell  
Tendra Burnett  
David L. Cooper

Shareen Dunn  
Chad Ellis  
Justin Moore  
Carl L. Williams, Sr.

### Past Board Members

Thank you to the following hard-working individuals who rotated off the Board of Directors at the end of 2022.

Anita Barbee, Ph.D.  
Margaret C. Bell  
Alex D. Croft  
Mike Fallot  
Andrew Owen

Frances M. Scholtz  
Chip Snyder  
Fiona Starks  
Chris Whelan



Dec. 2022-May 2023  
College Scholar  
Graduates

### UNDERGRADUATES

Micah Northern Kentucky University  
*BS in Psychology*

Jenay Fisk University  
*BS in Political Science*

Saraya Campbellsville University  
*BS in Sociology*

Corey Western Kentucky University  
*BA in Construction*

Lynice Campbellsville University  
*BA in Theological Counseling*

### GRADUATE SCHOOL

Janae University of North Carolina Charlotte  
*MA in Communications*

### TRADE SCHOOL

Trojanae PJ's Cosmetology  
*Beauty Certificate*

### 2022 PATCH PARTNERS

#### YOUNG AMBASSADORS MEMBERS

Rebecca Allen  
Bradley Bringardner  
Morgan Crockett  
Brett Leary  
Grady Nutt  
Alexandra Ortiz  
Robert Scholtz  
Henry W. Snyder  
Mary Gwen Walker  
Megan Imel, Board Liaison

# CHRISTMAS AND HOLIDAY HONORARIUMS

The following gifts were given by donors in honor of Family & Friends during the 2022 Christmas Holiday.

**Given by Bill Boland &**

**Brenda Johnston**  
Art & Debbi Dunlap  
Rose Lowry-Duke

**Given by Mike, Kathleen,**

**Ali & Kate Boland**  
Brenda Johnston

**Given by Louise & Bill Creason**

Ms. Ann Martin

**Given by Mary M. Cubine**

Mr. Mark Cubine & Lt. Col. &  
Susan Cheatwood, Ret.

**Given by Leslie Ellis**

Sandra Duerr  
Amy Elbert  
Valerie Elmore  
Leslie Scanlon

**Given by Bill & Susan Grubbs**

The Richard Clay Family  
Mr. & Mrs. W. Garrett Dering  
Helen Jones  
Mr. William G. Lussky, Jr.  
Susan & David Wood

**Given by Mary C. Hancock**

Mrs. Gillian H. Barnett  
Mrs. Cyrus Radford  
Mrs. Mary T. Means  
Anne Moore Ronald  
Mr. George E. Stablein  
Sue & Bos Todd  
Mrs. Thomas H. Wall

**Given by Dan & Marilyn Henry**

Lourdes & Culver Halliday

**Given by Brenda Johnston**

Ann Hudson

**Given by Helen Jones**

Susan & Bill Grubbs

**Given by Caldwell Miller**

Elizabeth & Corey Miller

**Given by Mr. & Mrs. Toby Nutt**

Eleanor & Bob Maddox

**Given by Martie Rankin**

Mr. & Mrs. Nathan Dicken  
Mrs. Anne Ehrman  
Mr. & Mrs. J. Rankin Mapother  
Mr. & Mrs. Hunter Rankin  
Mr. & Mrs. Josh Kragenbring

**Given by Mary S. Roney**

Chef Patrick Roney & Family

**Given by Mrs. Jeanie Shelman**

Liz Clemons  
Debra Farmer  
Carolyn Howard  
Susan King  
Mr. & Mrs. Jack Littrell  
Jean Nix  
Mr. & Mrs. Todd Peter and Family  
Rick Shelman  
Mr. & Mrs. John Steele and Family  
Samuel Steele

**Given by Susan & Chip Snyder**

Mr. & Mrs. Ralph D. Case, III  
Mr. Wesley A. Case  
Mr. Mark Cubine & Lt. Col. &  
Susan Cheatwood, Ret.  
Mrs. William P. Cubine

**Given by Mr. Sammy Steele**

Debbie Farmer  
Mr. & Mrs. Nick Faulkenberg  
Susan King  
Mr. & Mrs. Jack Littrell  
The Peter Family

Marilyn Peter  
Jeanie Shelman  
Rick Shelman  
Mr. & Mrs. John Steele and Sons  
Gary Steele

**Given by Ms. Sally Stewart**

Mr. Denis Stewart

**Given by Margaret Wadlington**

Ms. Elizabeth B. Magner

**Given by Mr. & Mrs. Anthony**

**Westmoreland**

Patsy & Gene Baker  
Ryan & Liz Baxter  
Carla & Bob Copas  
Sherry & Jason Emly  
Laurie & Mike Kemp  
Colleen Reilly & Derek Ingersoll  
Dr. Sara Denzinger-Rowe  
& Mr. Mike Rowe

**Given by Susan & David Wood**

Susan & Bill Grubbs

## SPECIAL HONORS

**for the birthday of Brenda Johnston**

Mr. & Mrs. Art Dunlap

**for the birthday of Rose Lowry-Duke**

Bill Boland & Brenda Johnston  
Zonia Maguire

**for the 90th birthday of Bob Maddox**

Jennifer Scott

**for the birthday of Ann Sommer**

Rose Lowry-Duke

**in memory of the birthday of Polly Williams**

Jan Adams

## HONORARIUMS & MEMORIALS

Thank you to the following donors who made gifts to The Cabbage Patch in honor of others from November 1, 2022, to March 31, 2023.

**Rob & Carole Christian**

Air Equipment Company

**Ms. Carol F. Armstrong**

Mr. Leslie Abramson

**Drew Beacham**

Dr. Lori Marshall  
Dr. Teresa Walker

**Kelly Burke**

Reverend John Burke

**Cabbage Patch**

**Settlement House Staff**

Alba B. Jennings  
Winona & Joe Shiprek

**Susan Turner & Larry Cashen**

Mr. Chris Cashen

**Mr. J. Larry Cashen**

Parker W. Duncan

**Kit Davis**

Elizabeth Haynes

**David Dorsey**

Tom & Karen Armstrong

**Jennifer Ferguson**

Rick & Julee Carucci  
Ms. Joyce W. Kneisley

**Karen Dahlem & Ken Minor**

Elizabeth & Corey Miller

**Bill Grubbs**

Glen & Brad Hume

**James & Rose Hawkins**

Ms. Nancy O. Stanbery

**Rev. J. Tracy Holladay**

Colonel Cecil A. Holladay  
& Dr. Linda W. Holladay

**Jody Lambert**

Sammie Lambert

**Mayghin & Eli Levine**

David & Ann Worland

**Joy Loomis**

Dr. Linda W. Holladay

**Rose Lowry-Duke**

Mr. & Mrs. Michael Boland  
Mr. Edwin J. Lowry, Jr.

**Bruce & Eleanor Lunsford**

Margaret Bromley

**Eleanor & Bob Maddox**

Amy Nutt

**Kyle Morton**

Dr. Philip Sapienza

**Jennifer Scott**

Mrs. Laura G. Diebold

**Rick & Ann Sommer**

Rose Lowry-Duke

**Steve Stratford**

Suzy & Marc Zemel

**Ms. Donna C. Stroud**

Margaretta &  
Thomas Chessler

**Phyllis Blythin Ward**

Mr. John Hardin Ward, IV

**Marita & Robert Willis**

Laurie Anne & Bill Roberts

**Mr. Stephen T. Wolford**

Dr. & Mrs. John B. Wolford

**David Wood**

Glen & Brad Hume

# HONORARIUMS & MEMORIALS

Thank you to the following donors who made gifts to The Cabbage Patch in memory of others from November 1, 2022 to March 31, 2023

**Charles F. Allen**

Mrs. Lois C. Allen

**Olene Woods Bailey**

Sandra Bailey

**Ethel Book**

Anonymous

**Harold A. Book**

Anonymous

**Hubert Book**

Anonymous

**Mr. David E. Brewer**

Patricia S. Hutchens  
Cynthia Conklin Robinson  
Cyndi Wilson

**Barbara & David Brewer**

Anonymous

**Alex J. Burch**

Regina Burch  
Mrs. Laura Hrouda-Burch  
& Mr. Jan Hrouda  
Dr. & Mrs. Paul Tittel, Jr.

**Mr. Joseph C. Burks, Sr.**

Dr. & Mrs. Joseph C. Burks, Jr.

**Mrs. Kathleen H. Burks**

The Dunaway Family

**Eleanor Caudill**

Access Navigator Team  
Mr. & Mrs. Charles Bensenhaver  
Mr. John Campbell  
Mr. & Mrs. David L. Roberts  
Elaine & Barry Wise

**James & Lelia Chandler**

Roxanne F. James

**Mrs. Margaret Ann Cloud Chandler**

Charles Chandler, Sr.

**Mr. Roosevelt Chin**

Mrs. Brittany Banks

**Eunice Chism**

Anonymous

**Norman Clemons**

Mrs. Jeanie Shelman

**Mrs. Harriet C. Collis**

Mary C. Hancock

**Hannah Cooper**

Mr. & Mrs. Pleas B. Wood

**Mr. Roger M. Dalton**

Mrs. Carol T. Gray

**Mrs. Caroline Davis**

Charlie & Edith Huber

**Alice Virginia Dodd**

Anonymous  
John & Cheeky Bahe  
Mr. Dewey Beadle  
Dr. & Mrs. Lawrence Boram  
Dr. & Mrs. Roy Bowling  
British Sports Car Club  
Ms. Emily L. Brown  
John & Tina Burkett  
The Carruthers Family  
Chenault M. Conway  
Mr. Christopher W. Davenport  
Jill Davenport  
Harriett Dodd-Port  
Patrick & Angela Duffy  
Mr. & Mrs. Marshall V. Heuser  
Rita Johnson  
Samuel & Eleanor Leuenberger  
Ms. Jean P. Littlefield  
Mrs. Kathy Ludwig  
Becky & Todd Lyles  
Mac & Tori McClure  
The Rodgers Family  
Mr. Joel A. Selker

Chip & Susan Snyder

Mimi & Bill Stites

Tom & Karen Sweets

Martha M. Tafel

Edie Wells

Mr. Chris Welsh

**Evelyn Draper**

Mr. Doug Draper

**Mary Ann Duddy**

Anonymous

**Mr. William G. Duncan, Jr.**

Mr. Robert F. Duncan

**Jack & Mary Kay Fallot**

Mr. & Mrs. John E. Fallot, Jr.

**Mrs. Anne B. Fields**

Mrs. Julia L. Fields

**Mr. Robert W. Greene, III**

Edie Wells

**Mr. Donald L. Harbst**

Marjorie A. Harbst

**Mr. Spencer E. Harper, Jr.**

Mrs. Carol Sharpe Harper

**Mrs. Mary K. Herdt**

Mr. & Mrs. Frederick R. Louis, Jr.

**Colonel Cecil A. "Doc" Holladay**

Cherie & Ray Cardaronella

Mr. & Mrs. James T. Crain, Jr.

Elizabeth & Bart Crum

Ms. Janna Green

Leon & Jan Holden

Tracy & Debbie Holladay

Mrs. Leah Holladay

North Trenholm Baptist

Church Staff

Vicki & June Prince

Patrick & JoAnn Pyles

Richard & Sherida Rice

Edie Wells

Stephen & Coretta Wolford

**Harold Howard**

Mrs. Jeanie Shelman

**Mr. James R. Hughes**

Rex Bishop

**Mrs. Norma J. Ingalls**

Larry & Dawn Eichenberger

**Peggy Kearns**

Anonymous

Charles Chandler, Sr.

Mr. & Mrs. Chuck Chandler

Corky Kearns

LifeSpan Inc.

George & Rella McFarland

Ms. Julie Murray

Ms. Sandra S. Peak

Ms. Molly Perry-McFarland

Ms. Lois Stewart

Ms. Linda Victoria

Ms. Valerie Yang

**John Fenton Kottkamp**

Anonymous

The James Allen Family

Alter Development + Realty

+ Home Loans

Mr. & Mrs. J. McFerran Barr, II

Ms. Melissa Burge

CBI Insurance

Mr. & Mrs. Douglas P. Chin

Ms. Mackenzie Davis &

Mr. Matt Green

Ms. Mary E. Davis

Dental Health Center, PLLC

The Dunn Family

Marshall Eldred

The Esters Family

Mr. George Glanz

Glen & Brad Hume

Megan Imel State Farm

Ms. Melanie Jefferson

Mrs. Kathy Kotcamp

Mr. Rush Kottkamp

Mr. & Mrs. Steve Kottkamp

Mr. & Mrs. Wayne Kottkamp

Mr. & Mrs. Brett Leary

Mr. Andrew McFann

Museum Bees by Trace Mayer

Amy Nutt

Mr. & Mrs. Grady Nutt

Mr. & Mrs. Toby Nutt

Mr. & Mrs. Reggie Oates

Mr. & Mrs. Isaac Ortiz

Parthenon LLC

Mr. & Mrs. Larry Roy

Mr. Thomas Staffieri

Mr. Chris Thompson

Mr. Jackson Tobe

Mr. Robert T. Weddington

Mr. Taylor Weese

Diane Wiegel

Ms. Laura Wiegel

Ms. Lexie Wiegel

Mr. Ross Wiegel

Tiffany & Mark Wiegel

Ms. Hannah Wilson &

Ms. Keanna Cohen

Hunter & Kristen Wilson

**Mr. Peter Krawchuk**

Tanya & Jim Marquardt

**Mrs. Billie Clair Kurpees**

Dr. & Mrs. Russell Rice

**Florence R. Leathers**

Jean Harkin

**Mr. Henry "Buddy" Leathers**

Rose Lowry-Duke

**Alice Leathers Luckett**

Jean Harkin

Charles & Rosemary Luckett

**Mr. Ben Matthews**

Mr. & Mrs. Frederick R. Louis, Jr.

**The Honorable Romano L. Mazzoli**

Raymond G. & Susan W. Smith

Mrs. Kelly Wesley Taylor

**Betsy McConnell**

Mr. & Mrs. Michael McConnell

**Mr. Ted Merhoff**

Ms. Ann Wiley Berry

**Ted & Dorcas Merhoff**

Howard & Nancy Graves

**Katherine Merrell**

Charlotte Walford

**Caroline Collis Moore**

Mary C. Hancock

**Barbara Morrow**

Anonymous

**John D. Moses**

Carolyn McCafferty Moses

**Blanton Neal**

Angela H. DeWeese

**Mr. Edward A. Nicolaus, III**

Mr. & Mrs. Frederick R. Louis, Jr.

**John Nix**

Mrs. Jeanie Shelman

**Dr. Robert Noel**

Angela H. DeWeese

**Marguerite O'Hara**

Mr. & Mrs. Pleas B. Wood

**Mr. James V. Oppel, Sr.**

Bill & Susan Grubbs

Ms. Nancy Lampton

David & Penny Pearson

Mr. Charles S. Raith

Mrs. Leslie Smart

Laurie & George Vieth, Jr.

**Brainard & Thames Palmer-Ball**

Ida Palmer-Ball

**Mrs. Helen Palmer-Ball**

Ida Palmer-Ball

**Mr. Shirley W. Palmer-Ball**

Ms. Ginny Brown

**Mrs. Thames Palmer-Ball**

William F. Booker

Charles B. Castner, Jr.

**Dr. James Paton, III**

Mrs. Patrice E. Paton

**Robert Clarence "Bo" Pearson**

Margaret Bromley

**Larry "Pete" Peter**

Mr. Sammy Steele

**Chad Plummer**

Lisa & Brandt Niehaus

**Lloyd "Pappy" Redman**

Dr. & Mrs. Joseph C. Burks, Jr.

**Opalene Woods Roark**

Sandra Bailey

**Mrs. Barbara C. Rodes**

Mary C. Hancock

**Marianne B. Rucker**

Embry Rucker & Joan MacLean

**Donna Schmidt**

Anonymous

**Mr. & Mrs. Paul M. Schmidt**

Regina Schmidt

**Charles & Mary Haggin Scholtz**

Quentin & Rebecca Scholtz

**Bill Shelman**

Mrs. Jeanie Shelman

Mr. Sammy Steele

**Eric W. Singer**

Margaret Wadlington

**Toyce Smith**

Anonymous

**Mr. Don W. Snyder**

Daryl W. Snyder

Mary Elizabeth Snyder

**Becky Steele**

Mr. Sammy Steele

**Mrs. Martha Steele**

Mrs. Jeanie Shelman

Mr. Sammy Steele

**Andrew Aaron Venetianer**

Mr. Steve Stratford

**Mrs. Polly Williams**

Kyle S. Bianconcini

**Mrs. Edith N. Wombwell**

Barbara Reid & David Hyman

*All gifts are deeply appreciated. If any names were omitted or there's an error, please accept our apology. Please contact The Cabbage Patch so that the appropriate corrections can be made.*

1413 SOUTH SIXTH STREET  
LOUISVILLE, KY 40208  
CABBAGEPATCH.ORG  
502.634.0811

**2023 Board of Directors**

**President** - Michael P. Drake

**President-Elect** - Michael J. Marshall, Ed.D.

**Treasurer** - Kourtney Nett

**Secretary** - Keri Reilly Westmoreland

Dr. Tracilia Beacham  
Ebony Bell  
Mickey Brown  
Tendra Burnett  
Doug Chin  
David L. Cooper  
Ken Coulter, Jr.  
Robert L. Crady, III  
Shannon DeWeese  
Mike Dickman  
David D. Dorsey  
Ryan Dozier  
Michael Duke  
Shareen Dunn  
Chad Ellis  
Charlie Farnsley  
Jennifer Ferguson

Christopher Hall  
Brad Hume  
Megan Imel  
Emily Lawrence  
Justin Moore  
Allison Pitman  
Robert W. Reuther  
Jessica Rives  
Grant Roberts  
Kristen Taylor  
Michael F. Wade  
Cynthia B. Welch  
Carl L. Williams, Sr.  
Robert E. Willis  
Steven R. Wilson  
Stephen Wolford

**Board Members Emeriti**

Lea Fischbach  
David Y. Wood

**Executive Director**

Rev. Corey G. Miller, D.Min.

**SAVE THE DATE!**  
**20th Annual Champions Event**

**LOVE**

Is Making a Difference

Thursday, September 21, 2023 5:30 PM  
The Parklands of Floyds Fork  
Gheens Foundation Lodge

PRESENTED BY  
 **BROWN-FORMAN**



**Reservations & Sponsorships are available**

Tickets begin at \$150/person \* Sponsorships start at just \$1200  
Silent and Premier Auction items will be available for online bidding

For event updates and details please visit [www.cabbagepatch.org/events/champions](http://www.cabbagepatch.org/events/champions)

Please contact Laura Goodman, Annual Fund and Special Events Manager at 502-753-4427 or [lgoodman@cabbagepatch.org](mailto:lgoodman@cabbagepatch.org) for more information.